

# DROP-ZONE

**Mondays (term time)**

**6pm-7:30pm**

**At Just Drop-In, Macclesfield**



Drop Zone is a peer support group which runs every Monday in term time and is for 11-16 year olds.

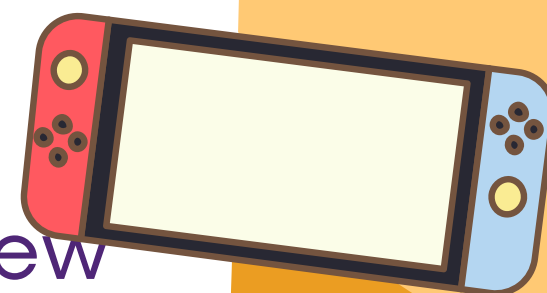
The group is led by Jen Chadwick and supported by volunteers Ken, Claire, and Lily. The group size is maximum of 10.



Young people in the group have the opportunity to cook/bake each week, engage with craft activities, play games or simply hang out with the other group members. Activities are planned with the young people.



This group is ideal if you want to learn new skills, make new friends and build your confidence socialising with peers in a supportive environment.



**Please check the website for availability to join this group before making contact with Jen: [jenni.chadwick@justdropin.co.uk](mailto:jenni.chadwick@justdropin.co.uk)**